



Greater Philadelphia

Center of Commercialization



BIO EUROPE

November 6, 2006

Perfectly Positioned

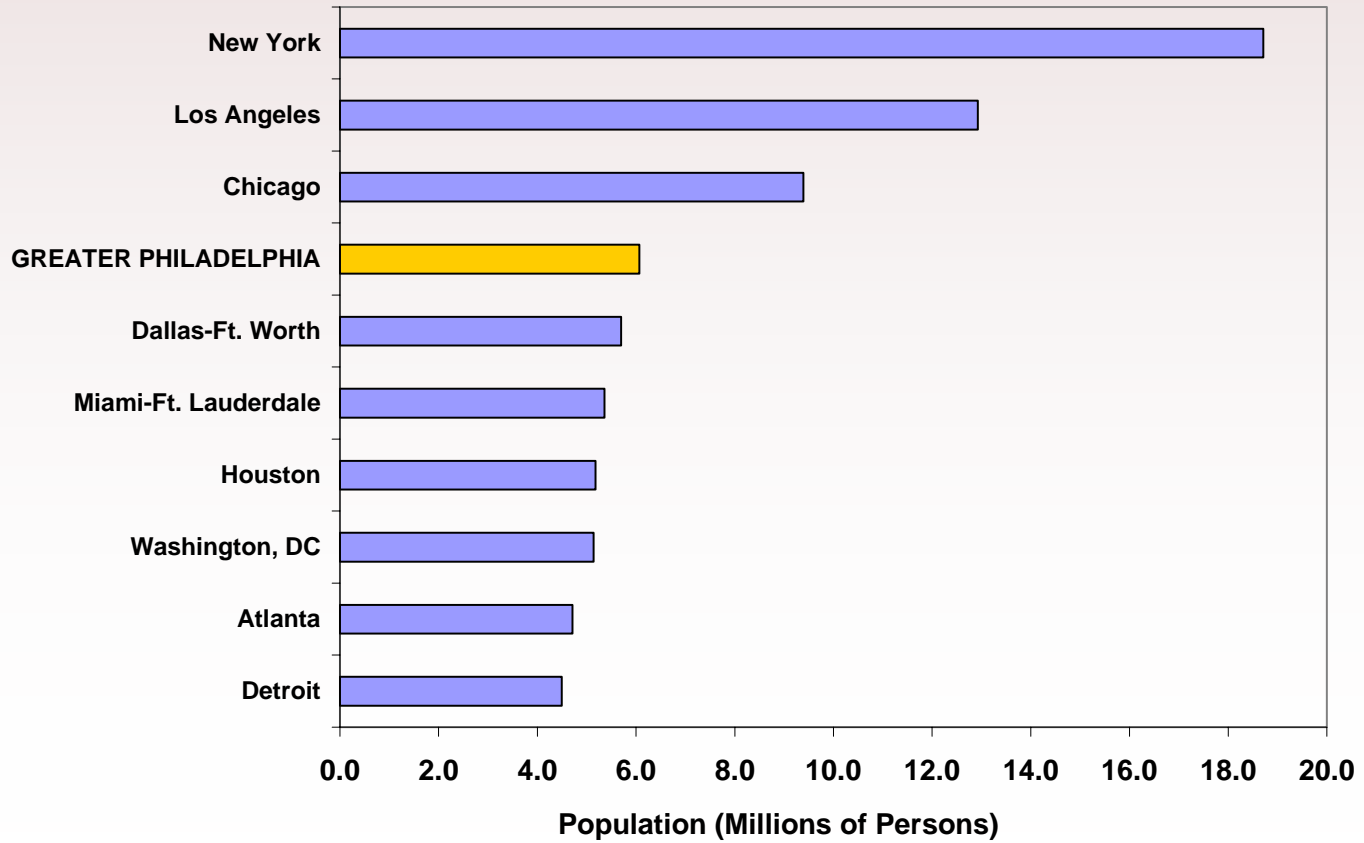


Map Courtesy of DVRPC

Greater Philadelphia

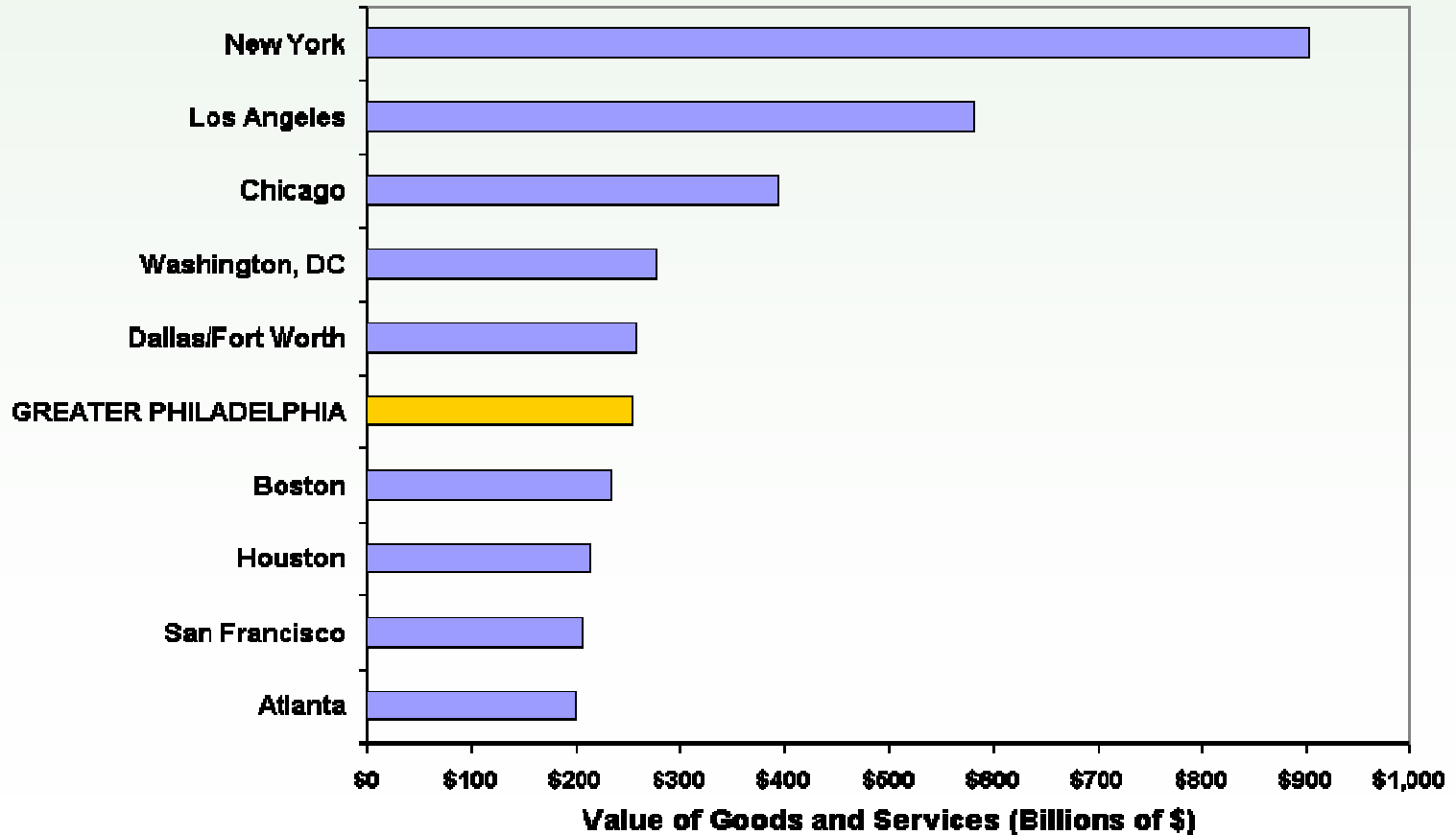
Population

Population in the 10 Largest Metros (2004)



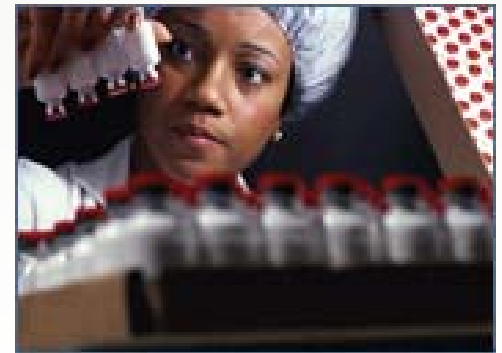
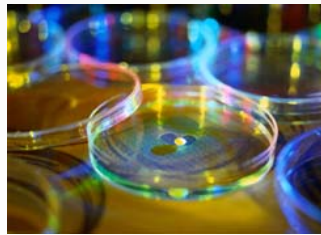
Gross Metro Product

Top US Metros for Gross Metro Product (2004)



Life Sciences

- **15 leading pharmaceutical firms; 8 headquarters**
- **53,000 life science employees**
- **312,000 supporting industry employees**
- **Milken Institute top ranked cluster**



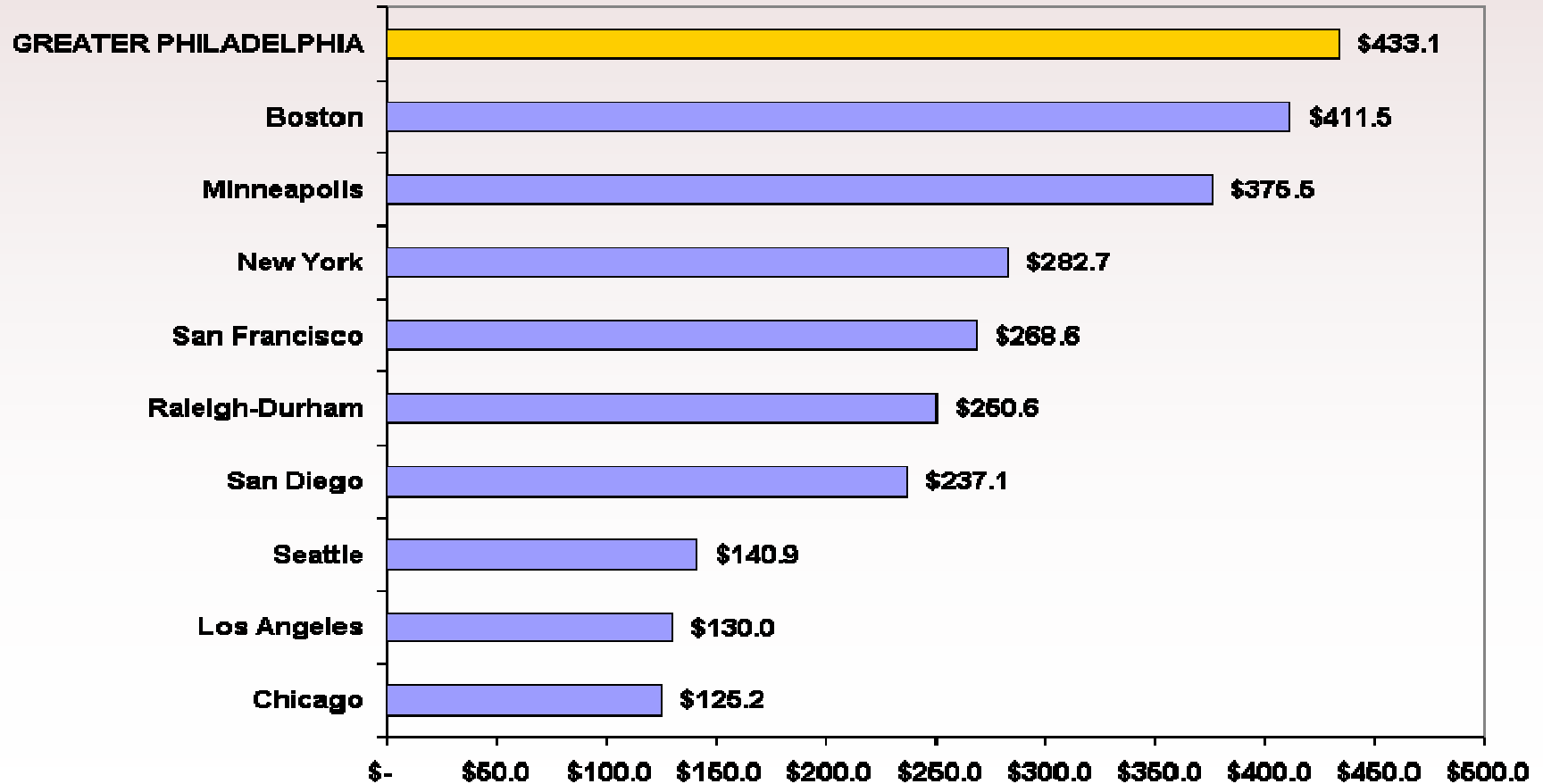
Healthcare

- **5 medical schools, 2 schools of pharmacy**
- **1 school each of dentistry, optometry and osteopathic medicine**
- **120 hospitals**
- **414 hospital beds per 100,000 persons**
- **#1 children's hospital in the country**
- **373.7 physician per 100,000 persons**



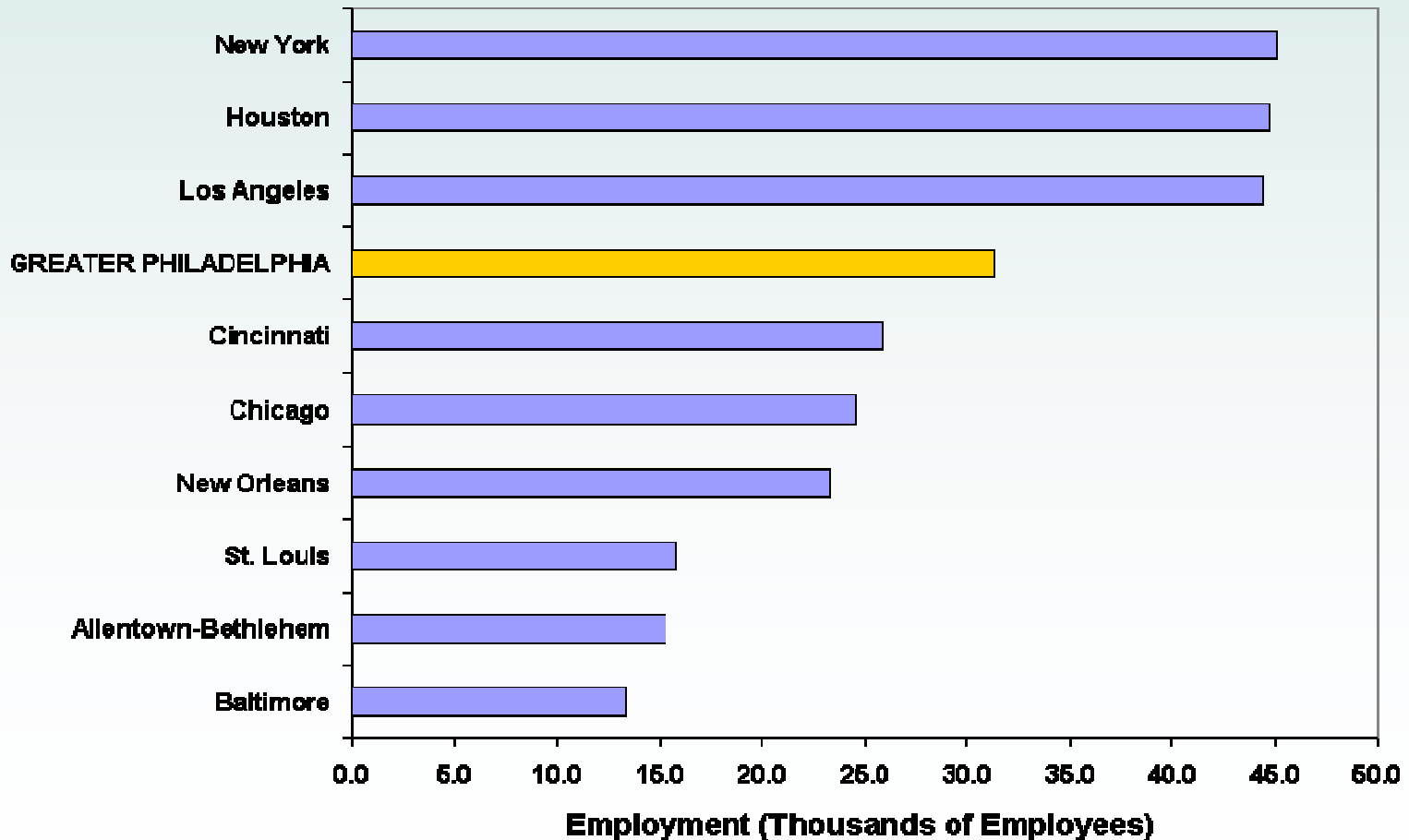
Research and Development

Industry R&D in the Life Sciences (US \$ per capita in 2002)



Chemicals

US Metros Employment in Chemicals Industry (2005)



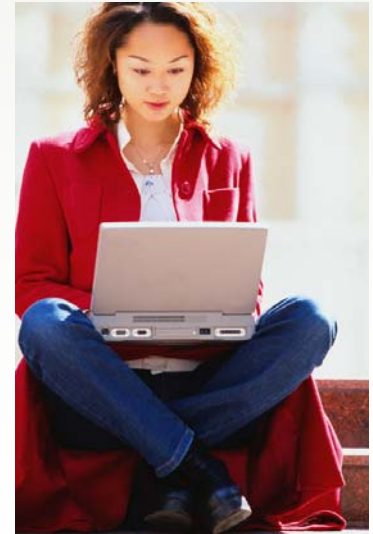
Global Gateway

- 2 hours to 60% of U.S. and Canadian population
- 6 hours to West Coast and Europe
- 31.5 million air travelers
- 30 carriers
- 700 daily departures to 120 cities
- 52 daily non-stops to 31 international cities



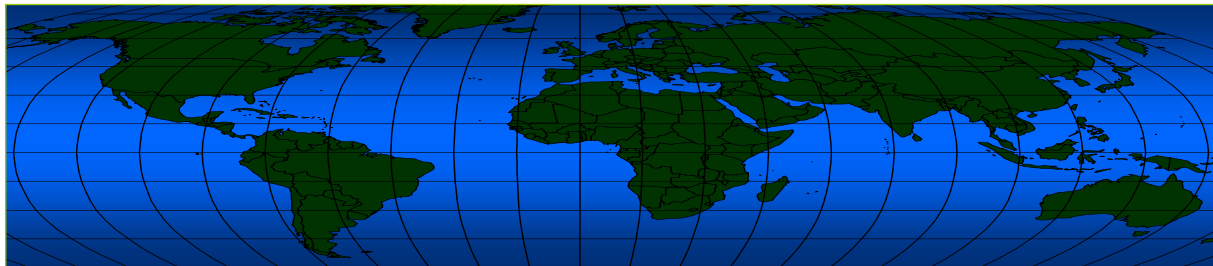
Talent


- 88 colleges and universities; 123 locations
- 66,000 degrees conferred
 - 9,895 Associate's Degrees
 - 34,732 Bachelor's Degrees
 - 21,785 Advanced Degrees
- 370,000 full- and part-time enrollment



Confidential and Complimentary Services

- Accurate data
- Market intelligence
- Useful introductions
- VC/financing contacts
- Regional and site tours
- Locality coordination





200 South Broad Street
Suite 700
Philadelphia, PA 19102-3896
P: 215.790.3777 or 1.800.221.0774
F: 215.790.3720

www.SelectGreaterPhiladelphia.com

